

Homophones and Near Homophones

Practise your weekly spelling words using cursive handwriting.

grate

great

grown

groan

plain

plane

peace

piece

rain

reign

Homophones and Near Homophones

Practise your weekly spelling words using cursive handwriting.

grate

great

grown

groan

plain

plane

peace

piece

rain

reign

Homophones and Near Homophones

Practise your weekly spelling words using print handwriting.

grate

great

grown

groan

plain

plane

peace

piece

rain

reign

Stick Overlay Sheet Here

Stick Overlay Sheet Here

Stick Overlay Sheet Here

grate

great

grown

groan

plain

plane

peace

piece

rain

reign

Look

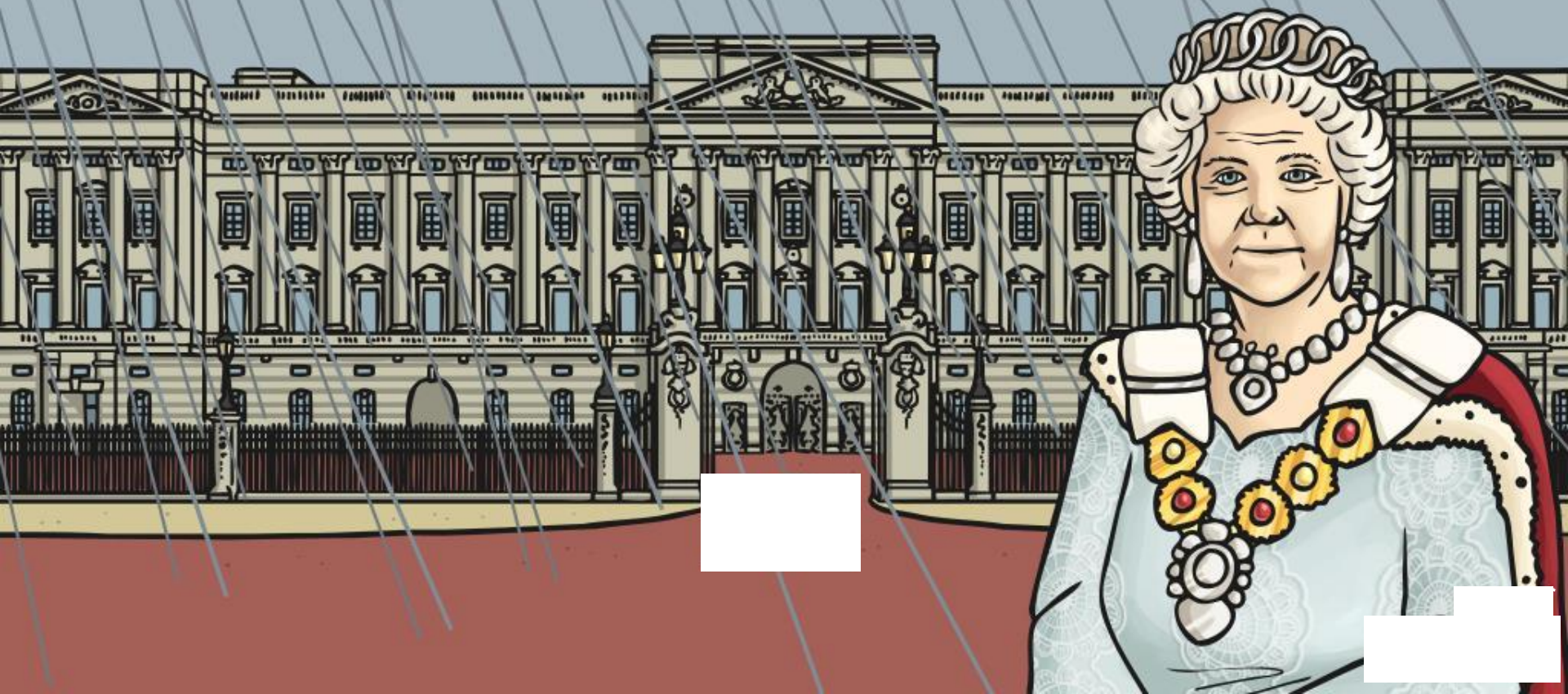
Write

Check

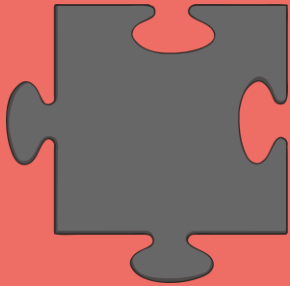
Year 3 Term 2B

Week 1

Homophones and Near Homophones



What do you notice about these pairs of words?



piece



peace



rain



reign

This week we are looking at sets of words which all sound the same but are spelt differently...

grate

grown

plain

peace

rain

great

groan

plane

piece

reign

What is similar about these pairs of words?
What is different?

These words are homophones or near homophones.
This means that they sound the same (or similar) but
have different spellings.

Here are this week's spellings to practise.

grate

great

grown

groan

plain

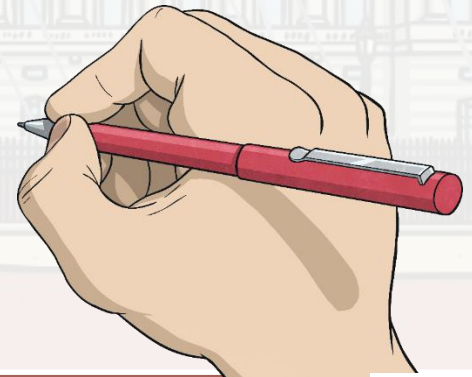
plane

peace

piece

rain

reign





<p>Week 1</p> <p>Homophones and Near Homophones</p> <p>grate plane</p> <p>great peace</p> <p>grown piece</p> <p>groan rain</p> <p>plain reign</p>	<p>Week 1</p> <p>Homophones and Near Homophones</p> <p>grate plane</p> <p>great peace</p> <p>grown piece</p> <p>groan rain</p> <p>plain reign</p>	<p>Week 1</p> <p>Homophones and Near Homophones</p> <p>grate plane</p> <p>great peace</p> <p>grown piece</p> <p>groan rain</p> <p>plain reign</p>	<p>Week 1</p> <p>Homophones and Near Homophones</p> <p>grate plane</p> <p>great peace</p> <p>grown piece</p> <p>groan rain</p> <p>plain reign</p>
<p>Week 1</p> <p>Homophones and Near Homophones</p> <p>grate plane</p> <p>great peace</p> <p>grown piece</p> <p>groan rain</p> <p>plain reign</p>	<p>Week 1</p> <p>Homophones and Near Homophones</p> <p>grate plane</p> <p>great peace</p> <p>grown piece</p> <p>groan rain</p> <p>plain reign</p>	<p>Week 1</p> <p>Homophones and Near Homophones</p> <p>grate plane</p> <p>great peace</p> <p>grown piece</p> <p>groan rain</p> <p>plain reign</p>	<p>Week 1</p> <p>Homophones and Near Homophones</p> <p>grate plane</p> <p>great peace</p> <p>grown piece</p> <p>groan rain</p> <p>plain reign</p>

Homophones and Near Homophones

r i s v t o t q b g w w
a p t w p o g l p h o b
i n d o v q z r o b j d
n d i v j q d c o n k g
i l t a e r g x t w r b
e x y n l g b p b o n g
t l c a l p x c a a k l
a d e s r i y n o w c h
r b q c d e n a l p c i
g d a h a c i i u x a c
t n k q z e k g v q s l
m n z q c z p z n g b o

grate

great

grown

groan

plain

plane

peace

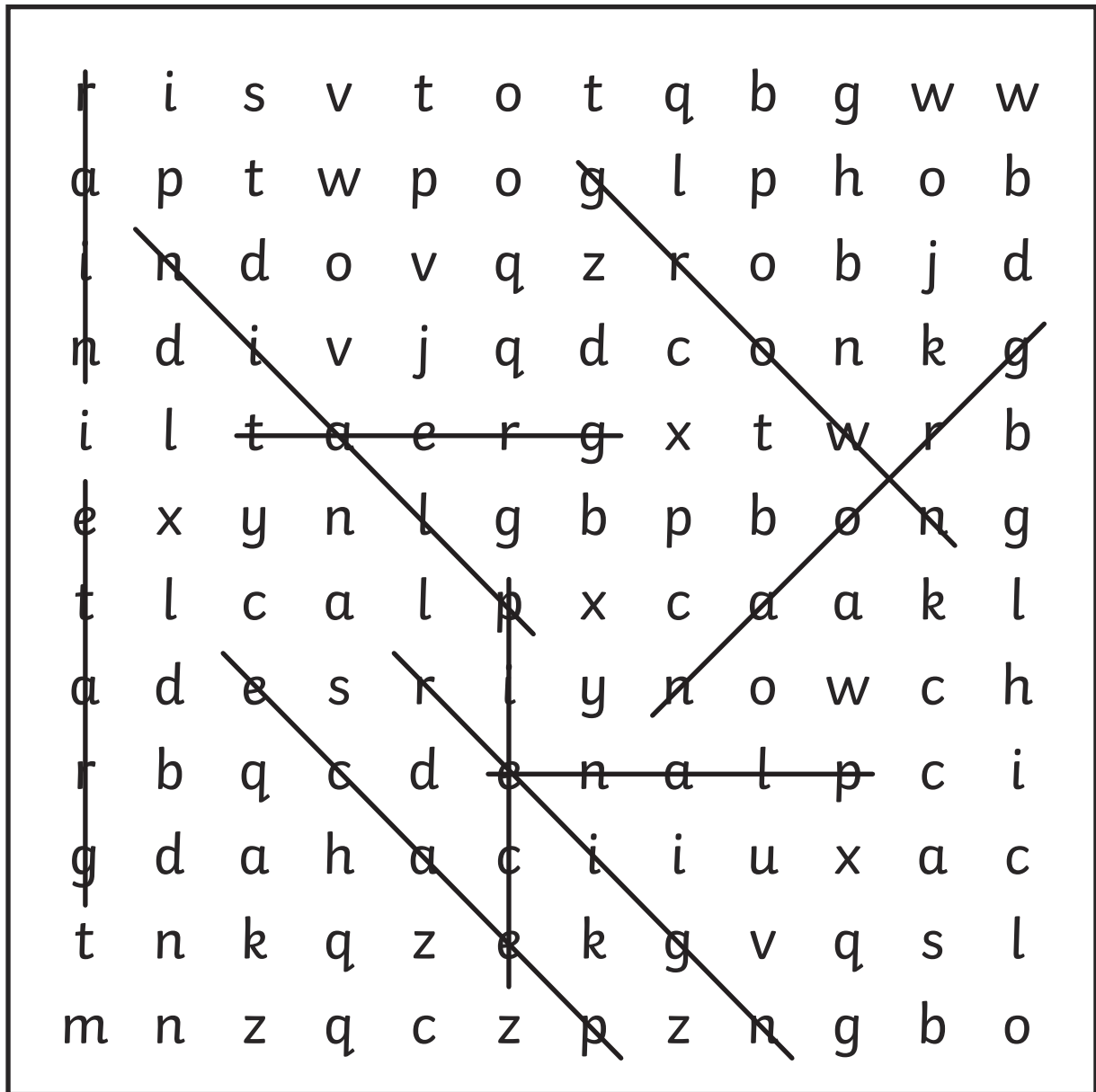
piece

rain

reign

Homophones and Near Homophones

Answers



- | | | |
|-------|-------|-------|
| grate | plain | |
| great | plane | rain |
| grown | peace | reign |
| groan | piece | |

Year 3 Term 2B Overview

Objectives that are in pink are a Y3/Y4 statutory requirement and individual words highlighted pink are from the Y3/Y4 statutory spelling list. The additional sets either: revise previously visited spelling rules from lower year groups; practise a spelling rule linked to a Y3/Y4 statutory spelling word or relate to a word, sentence or punctuation objective from the English Appendix 2 of the NC 2014. Each set of spellings contains 10 words linked to the objective.

Week 1 Homophones & Near Homophones	Week 2 Homophones & Near Homophones	Week 3 Adding the prefix bi- (meaning 'two' or 'twice') and Adding the prefix re- (meaning 'again' or 'back')	Week 4 Words ending in the /g/ sound spelt 'gue' and the /k/ sound spelt 'que'	Week 5 Words with a /sh/ sound spelt with 'ch'	Week 6 Statutory Spellings Challenge Words
grate great grown groan plain plane peace piece rain reign	scent sent vain vein rode road steel steal waist waste	bicycle biplane bisect bilingual biannual reappear redecorate reapply repay rebuild	league plague rogue vague fatigue unique antique mosque cheque technique	chef chalet machine brochure crochet ricochet parachute moustache champagne chute	address busy business heart fruit breathe strange complete extreme forwards

Homophones and Near Homophones

Practise your weekly spelling words using cursive handwriting.

scent

sent

vain

vein

rode

road

steel

steal

waist

waste

Homophones and Near Homophones

Practise your weekly spelling words using cursive handwriting.

scent

sent

vain

vein

rode

road

steel

steal

waist

waste

Homophones and Near Homophones

Practise your weekly spelling words using print handwriting.

scent

sent

vain

vein

rode

road

steel

steal

waist

waste

Stick Overlay Sheet Here

Stick Overlay Sheet Here

Stick Overlay Sheet Here

scent

sent

vain

vein

rode

road

steel

steal

waist

waste

Look
Say
Cover

Write

Check

Week 2

Homophones and
Near Homophones

scent road
sent steel
vain steal
vein waist
rode waste

Week 2

Homophones and
Near Homophones

scent road
sent steel
vain steal
vein waist
rode waste

Week 2

Homophones and
Near Homophones

scent road
sent steel
vain steal
vein waist
rode waste

Week 2

Homophones and
Near Homophones

scent road
sent steel
vain steal
vein waist
rode waste

Week 2

Homophones and
Near Homophones

scent road
sent steel
vain steal
vein waist
rode waste

Week 2

Homophones and
Near Homophones

scent road
sent steel
vain steal
vein waist
rode waste

Week 2

Homophones and
Near Homophones

scent road
sent steel
vain steal
vein waist
rode waste

Week 2

Homophones and
Near Homophones

scent road
sent steel
vain steal
vein waist
rode waste

Homophones and Near Homophones

l f i w s t e a l y l s c b n
 g y k f d t x n t f k x u e u
 w w m r y u u t p s t e e l e
 a z j a l i b v p y w k o d c
 i q d d l r e p y s d g o z x
 s k y l v t e v n j x r v f t
 t e l c s k b o s u c h x s x
 t m u a c a v a u t s x f c c
 p c w p a m a r e t g a x e n
 k y r v k e i z z w w a r n l
 m b m s s d n g u a u g v t t
 b k m r t i p r i p w x o c v
 g t q n t a e e u q i x n u x
 y b e g b z a a q s v q f n j
 x s r o a d l r c e v e i n b

scent

vein

steel

waste

sent

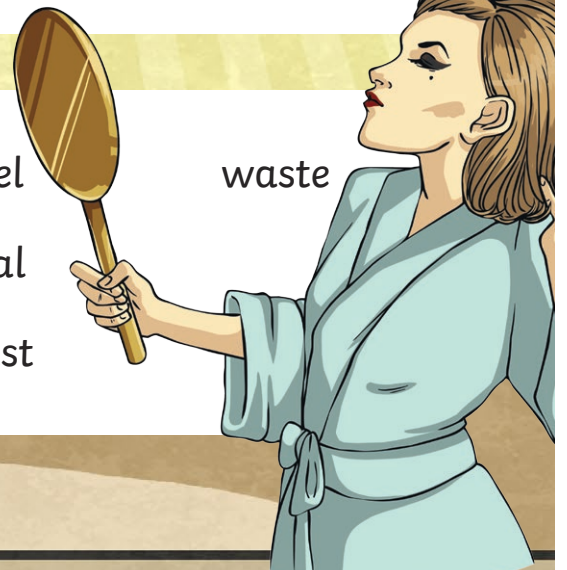
rode

steal

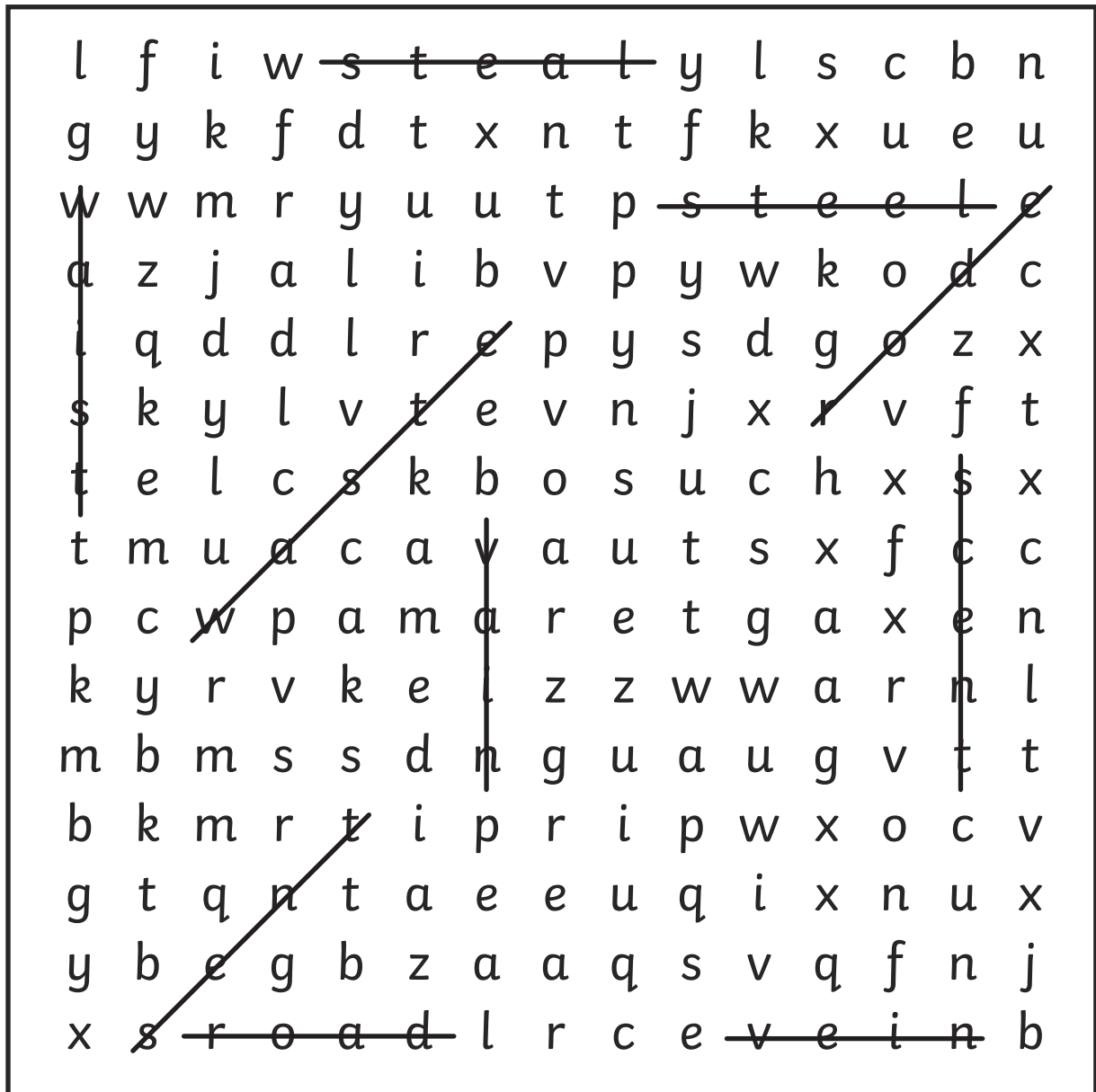
vain

road

waist



Homophones and Near Homophones - Answers



scent	vein	steel	waste
sent	rode	steal	
vain	road	waist	

Homophones and Near Homophones



This week we are looking at sets of words which all sound the same but are spelt differently...

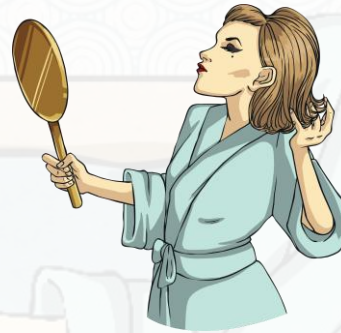
What do you notice about these pairs of words?



rode



road



vain



vein



scent

sent

vain

vein

rode

road

steel

steal

waist

waste

What is similar about these pairs of words? What is different?

These words are homophones or near homophones. This means that they sound the same (or similar) but have different spellings.



Here are this week's spellings to practise.

scent

road

sent

steel

vain

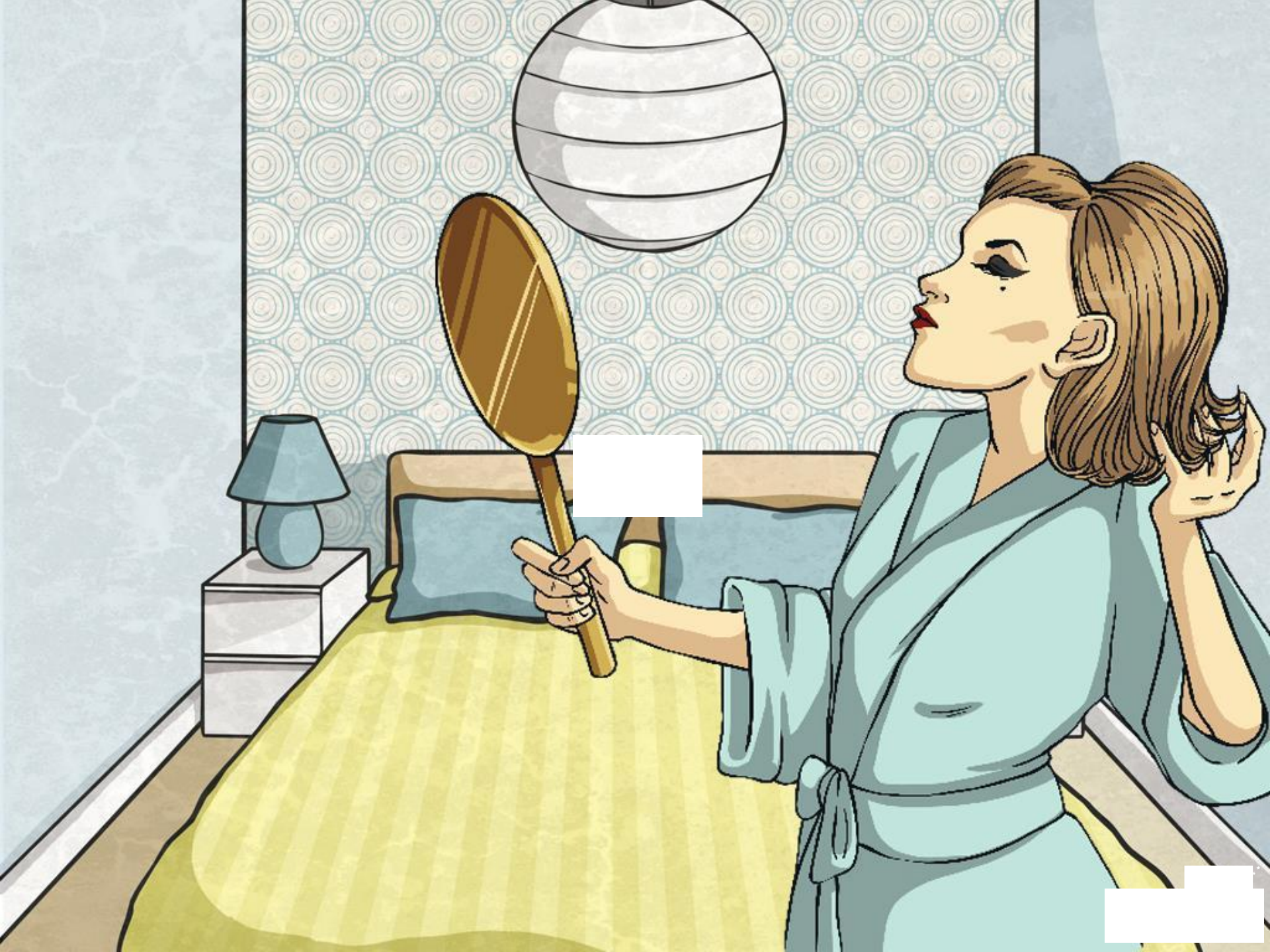
steal

vein

waist

rode

waste



Year 3 Term 2B Overview

Objectives that are in pink are a Y3/Y4 statutory requirement and individual words highlighted pink are from the Y3/Y4 statutory spelling list. The additional sets either: revise previously visited spelling rules from lower year groups; practise a spelling rule linked to a Y3/Y4 statutory spelling word or relate to a word, sentence or punctuation objective from the English Appendix 2 of the NC 2014. Each set of spellings contains 10 words linked to the objective.

Week 1 Homophones & Near Homophones	Week 2 Homophones & Near Homophones	Week 3 Adding the prefix bi- (meaning 'two' or 'twice') and Adding the prefix re- (meaning 'again' or 'back')	Week 4 Words ending in the /g/ sound spelt 'gue' and the /k/ sound spelt 'que'	Week 5 Words with a /sh/ sound spelt with 'ch'	Week 6 Statutory Spellings Challenge Words
grate	scent	bicycle	league	chef	address
great	sent	biplane	plague	chalet	busy
grown	vain	bisect	rogue	machine	business
groan	vein	bilingual	vague	brochure	heart
plain	rode	biannual	fatigue	crochet	fruit
plane	road	reappear	unique	ricochet	breathe
peace	steel	redecorate	antique	parachute	strange
piece	steal	reapply	mosque	moustache	complete
rain	waist	repay	cheque	champagne	extreme
reign	waste	rebuild	technique	chute	forwards

Adding the Prefix bi- (Meaning 'two' or 'twice')
Adding the Prefix re- (Meaning 'again' or 'back')

Practise your weekly spelling words using cursive handwriting.

bicycle

biplane

bisect

bilingual

biannual

reappear

redecorate

reapply

repay

rebuild

Adding the Prefix bi- (Meaning 'two' or 'twice')
Adding the Prefix re- (Meaning 'again' or 'back')

Practise your weekly spelling words using cursive handwriting.

bicycle

biplane

bisect

bilingual

biannual

reappear

redecorate

reapply

repay

rebuild

Adding the Prefix bi- (Meaning 'two' or 'twice')
Adding the Prefix re- (Meaning 'again' or 'back')

Practise your weekly spelling words using print handwriting.

bicycle

biplane

bisect

bilingual

biannual

reappear

redecorate

reapply

repay

rebuild

Stick Overlay Sheet Here

Stick Overlay Sheet Here

Stick Overlay Sheet Here

bicycle

biplane

bisect

bilingual

biannual

reappear

redecorate

reapply

repay

rebuild

Look
Say
Cover

Write

Check

<p style="text-align: center;">Week 3</p> <p style="text-align: center;">Adding the Prefix bi- (Meaning 'two' or 'twice')</p> <p style="text-align: center;">Adding the Prefix re- (Meaning 'again' or 'back')</p> <p>bicycle reappear</p> <p>biplane redecorate</p> <p>bisect reapply</p> <p>bilingual repay</p> <p>biannual rebuild</p>	<p style="text-align: center;">Week 3</p> <p style="text-align: center;">Adding the Prefix bi- (Meaning 'two' or 'twice')</p> <p style="text-align: center;">Adding the Prefix re- (Meaning 'again' or 'back')</p> <p>bicycle reappear</p> <p>biplane redecorate</p> <p>bisect reapply</p> <p>bilingual repay</p> <p>biannual rebuild</p>	<p style="text-align: center;">Week 3</p> <p style="text-align: center;">Adding the Prefix bi- (Meaning 'two' or 'twice')</p> <p style="text-align: center;">Adding the Prefix re- (Meaning 'again' or 'back')</p> <p>bicycle reappear</p> <p>biplane redecorate</p> <p>bisect reapply</p> <p>bilingual repay</p> <p>biannual rebuild</p>	<p style="text-align: center;">Week 3</p> <p style="text-align: center;">Adding the Prefix bi- (Meaning 'two' or 'twice')</p> <p style="text-align: center;">Adding the Prefix re- (Meaning 'again' or 'back')</p> <p>bicycle reappear</p> <p>biplane redecorate</p> <p>bisect reapply</p> <p>bilingual repay</p> <p>biannual rebuild</p>
<p style="text-align: center;">Week 3</p> <p style="text-align: center;">Adding the Prefix bi- (Meaning 'two' or 'twice')</p> <p style="text-align: center;">Adding the Prefix re- (Meaning 'again' or 'back')</p> <p>bicycle reappear</p> <p>biplane redecorate</p> <p>bisect reapply</p> <p>bilingual repay</p> <p>biannual rebuild</p>	<p style="text-align: center;">Week 3</p> <p style="text-align: center;">Adding the Prefix bi- (Meaning 'two' or 'twice')</p> <p style="text-align: center;">Adding the Prefix re- (Meaning 'again' or 'back')</p> <p>bicycle reappear</p> <p>biplane redecorate</p> <p>bisect reapply</p> <p>bilingual repay</p> <p>biannual rebuild</p>	<p style="text-align: center;">Week 3</p> <p style="text-align: center;">Adding the Prefix bi- (Meaning 'two' or 'twice')</p> <p style="text-align: center;">Adding the Prefix re- (Meaning 'again' or 'back')</p> <p>bicycle reappear</p> <p>biplane redecorate</p> <p>bisect reapply</p> <p>bilingual repay</p> <p>biannual rebuild</p>	<p style="text-align: center;">Week 3</p> <p style="text-align: center;">Adding the Prefix bi- (Meaning 'two' or 'twice')</p> <p style="text-align: center;">Adding the Prefix re- (Meaning 'again' or 'back')</p> <p>bicycle reappear</p> <p>biplane redecorate</p> <p>bisect reapply</p> <p>bilingual repay</p> <p>biannual rebuild</p>

Adding the Prefix bi- (Meaning 'two' or 'twice')

Adding the Prefix re- (Meaning 'again' or 'back')

h j d f n b i p l a n e d h a
k z y b n r e d e c o r a t e
c b i l i n g u a l h h x r m
g h u m r s q f n p b q e x q
p i d b n e e j s x i f e o w
e w m f j m a c j y a a f c k
z c q r e y r p t f n t a c t
r e c z f a e h p s n b q r n
r s r m o b b q t e u e b w h
v v e p y i u c d q a t u h w
s c a a o c i h w w l r u n e
o f p p l y l x q p t y a j o
t e p r q c d z j z v g q m s
r w l m d l o n f o d q v b l
n e y z a e o g l b c g i q b

bicycle

bilingual

redecorate

rebuild

biplane

biannual

reapply

bisect

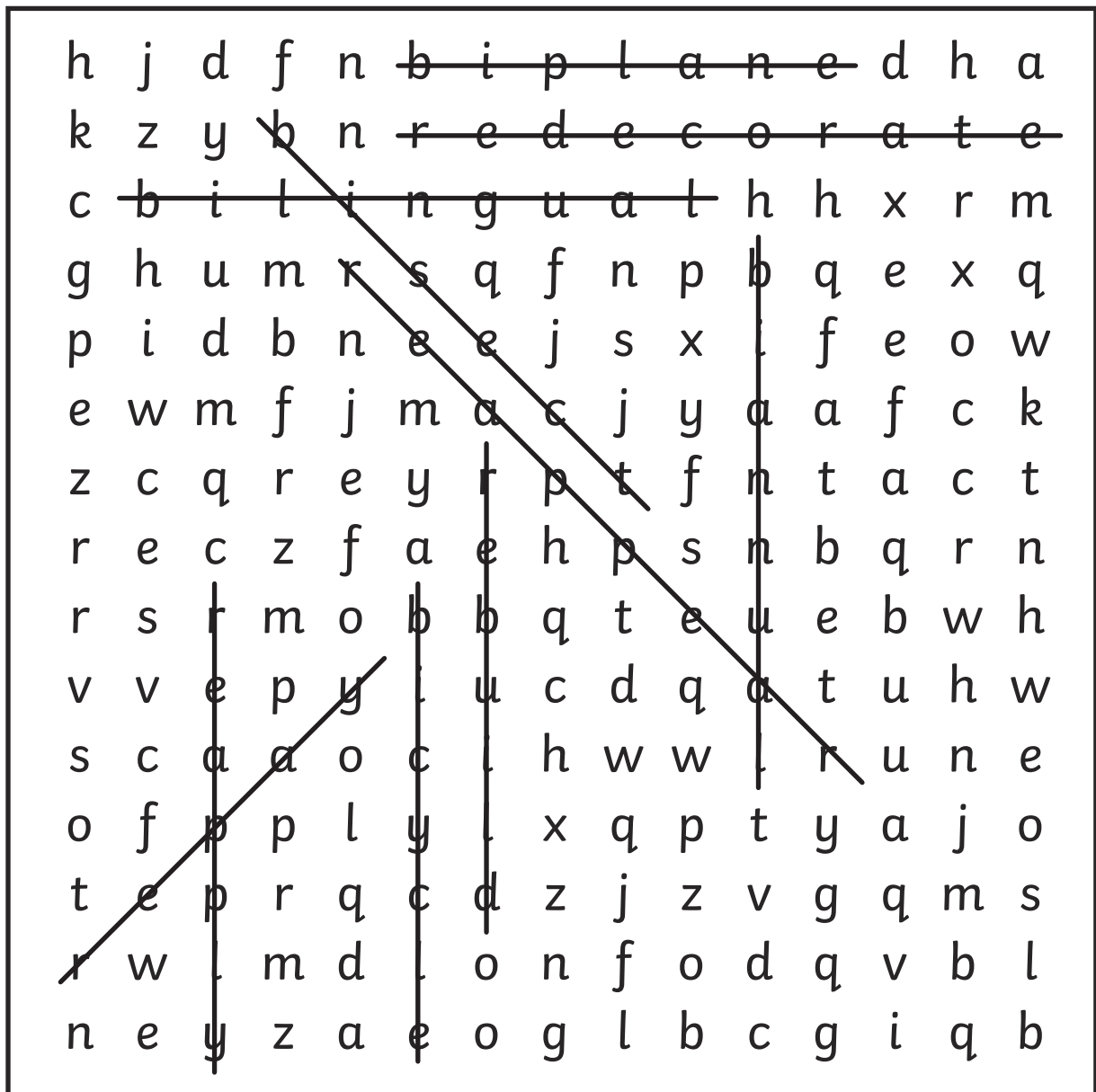
reappear

repay



Adding the Prefix bi- (Meaning 'two' or 'twice')
Adding the Prefix re- (Meaning 'again' or 'back')

Answers



bicycle	bilingual	redecorate	rebuild
biplane	biannual	reapply	
bisect	reappear	repay	

Year 3 Term 2B Overview

Objectives that are in **pink** are a Y3/Y4 statutory requirement and individual words highlighted **pink** are from the Y3/Y4 statutory spelling list. The additional sets either: revise previously visited spelling rules from lower year groups; practise a spelling rule linked to a Y3/Y4 statutory spelling word or relate to a word, sentence or punctuation objective from the English Appendix 2 of the NC 2014. Each set of spellings contains 10 words linked to the objective.

Week 1 Homophones & Near Homophones	Week 2 Homophones & Near Homophones	Week 3 Adding the prefix bi- (meaning 'two' or 'twice') and Adding the prefix re- (meaning 'again' or back')	Week 4 Words ending in the /g/ sound spelt 'gue' and the /k/ sound spelt 'que'	Week 5 Words with a /sh/ sound spelt with 'ch'	Week 6 Statutory Spellings Challenge Words
grate great grown groan plain plane peace piece rain reign	scent sent vain vein rode road steel steal waist waste	bicycle biplane bisect bilingual biannual reappear redecorate reapply repay rebuild	league plague rogue vague fatigue unique antique mosque cheque technique	chef chalet machine brochure crochet ricochet parachute moustache champagne chute	address busy business heart fruit breathe strange complete extreme forwards

Adding the Prefix bi-
(Meaning 'two' or 'twice')
Adding the Prefix re-
(Meaning 'again' or 'back')



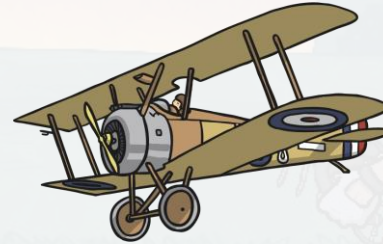
What do you notice about these words?



bicycle



repay



biplane



rebuild

This week, we are looking at words which all start with two different prefixes...

bicycle

biplane

bisect

bilingual

biannual

reappear

redecorate

reapply

repay

rebuild

Which two prefixes do these words have in common?

What do those prefixes do to the meaning of the word?

Some of these words start with the prefix *bi-*
bi- means 'two' or 'twice'

The rest of these words start with the prefix *re-*
re- means 'again' or 'back'

Here are this week's spellings to practise.

bicycle

reappear

biplane

redecorate

bisect

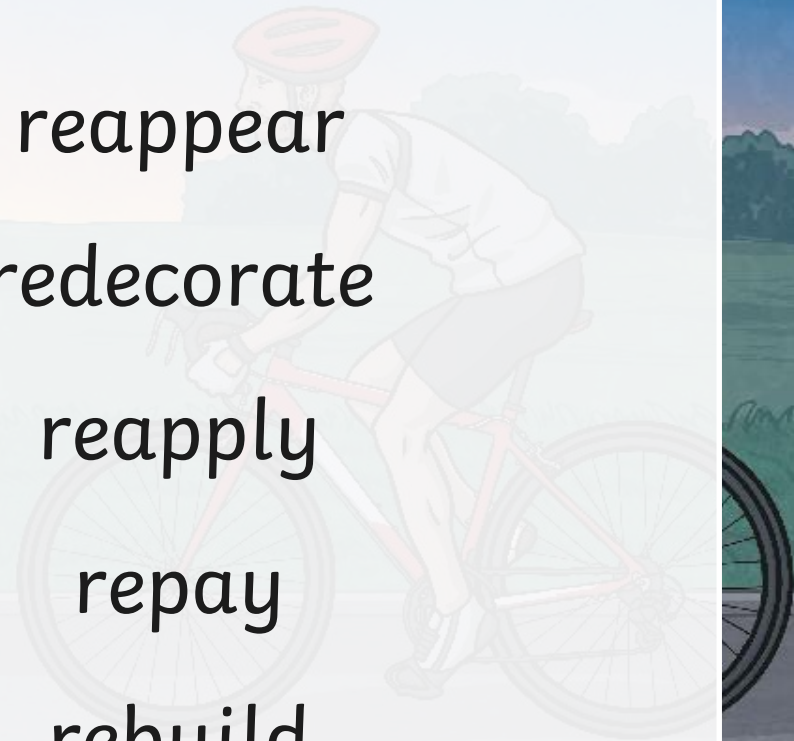
reapply

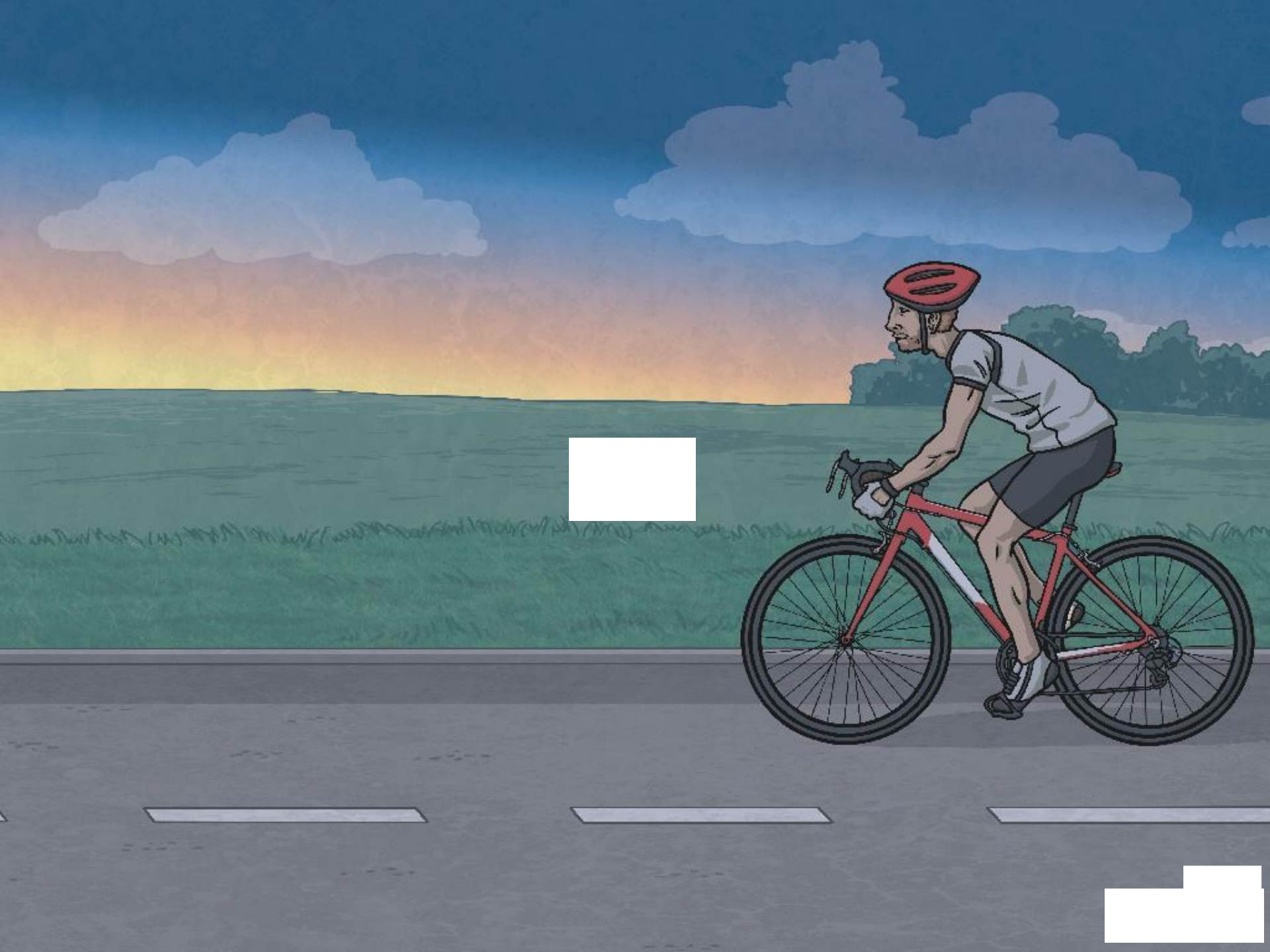
bilingual

repay

biannual

rebuild





Words Ending In The /g/ Sound Spelt 'gue' and the /k/ Sound Spelt 'que'

Practise your weekly spelling words using cursive handwriting.

league

plague

rogue

vague

fatigue

unique

antique

mosque

cheque

technique

Words Ending In The /g/ Sound Spelt 'gue' and the /k/ Sound Spelt 'que'

Practise your weekly spelling words using cursive handwriting.

league

plague

rogue

vague

fatigue

unique

antique

mosque

cheque

technique

Words Ending In The /g/ Sound Spelt 'gue' and the /k/ Sound Spelt 'que'

Practise your weekly spelling words using print handwriting.

league

plague

rogue

vague

fatigue

unique

antique

mosque

cheque

technique

Stick Overlay Sheet Here

Stick Overlay Sheet Here

Stick Overlay Sheet Here

league

plague

rogue

vague

fatigue

unique

antique

mosque

cheque

technique

Look
Say
Cover

Write

Check

<p style="text-align: center;">Week 4 Words Ending In The /g/ Sound Spelt 'gue' and the /k/ Sound Spelt 'que'</p> <p>league unique</p> <p>plague antique</p> <p>rogue mosque</p> <p>vague cheque</p> <p>fatigue technique</p>	<p style="text-align: center;">Week 4 Words Ending In The /g/ Sound Spelt 'gue' and the /k/ Sound Spelt 'que'</p> <p>league unique</p> <p>plague antique</p> <p>rogue mosque</p> <p>vague cheque</p> <p>fatigue technique</p>	<p style="text-align: center;">Week 4 Words Ending In The /g/ Sound Spelt 'gue' and the /k/ Sound Spelt 'que'</p> <p>league unique</p> <p>plague antique</p> <p>rogue mosque</p> <p>vague cheque</p> <p>fatigue technique</p>	<p style="text-align: center;">Week 4 Words Ending In The /g/ Sound Spelt 'gue' and the /k/ Sound Spelt 'que'</p> <p>league unique</p> <p>plague antique</p> <p>rogue mosque</p> <p>vague cheque</p> <p>fatigue technique</p>
<p style="text-align: center;">Week 4 Words Ending In The /g/ Sound Spelt 'gue' and the /k/ Sound Spelt 'que'</p> <p>league unique</p> <p>plague antique</p> <p>rogue mosque</p> <p>vague cheque</p> <p>fatigue technique</p>	<p style="text-align: center;">Week 4 Words Ending In The /g/ Sound Spelt 'gue' and the /k/ Sound Spelt 'que'</p> <p>league unique</p> <p>plague antique</p> <p>rogue mosque</p> <p>vague cheque</p> <p>fatigue technique</p>	<p style="text-align: center;">Week 4 Words Ending In The /g/ Sound Spelt 'gue' and the /k/ Sound Spelt 'que'</p> <p>league unique</p> <p>plague antique</p> <p>rogue mosque</p> <p>vague cheque</p> <p>fatigue technique</p>	<p style="text-align: center;">Week 4 Words Ending In The /g/ Sound Spelt 'gue' and the /k/ Sound Spelt 'que'</p> <p>league unique</p> <p>plague antique</p> <p>rogue mosque</p> <p>vague cheque</p> <p>fatigue technique</p>

Words Ending In The /g/ Sound Spelt 'gue' and the /k/ Sound Spelt 'que'

x x y t e o p h z v a g u e x
 x t q s g u o t p x b r f e v
 d e r v m e u x x q m o l b l
 b t e c h n i q u e o g n o i
 c x i q t f t k i d s u v p n
 i d n p o a e n y f q e i c c
 z r s x v t l s a y u g t g h
 f m f c u i l n x n e f k f e
 l j h v b g v e m r t y n t q
 c d n u q u c i a r s i i s u
 u n i q u e i m f g d d q v e
 t y f p f f j j d u u w t u j
 a q u k v u d t h m s e z u e
 i p l a g u e p m k p t h w k
 s x f i m c e w n m l o q z a

league

vague

antique

technique

plague

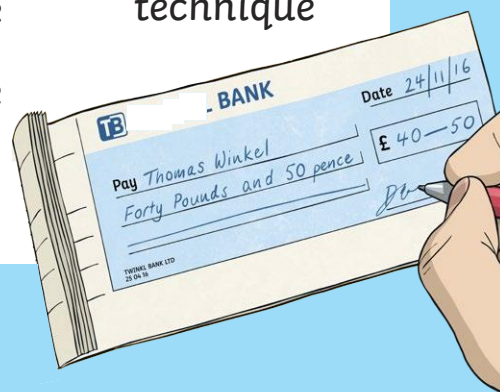
fatigue

mosque

rogue

unique

cheque



Words Ending In The /g/ Sound Spelt 'gue' and the /k/ Sound Spelt 'que'

Answers

x	x	y	t	e	o	p	h	z	v	a	g	u	e	x
x	t	q	s	g	u	o	t	p	x	b	r	f	e	v
d	e	r	v	m	e	u	x	x	q	m	o	l	b	l
b	t	e	c	h	n	i	q	u	e	o	g	n	o	i
c	x	i	q	t	f	t	k	i	d	s	u	v	p	n
i	d	n	p	o	a	e	n	y	f	q	e	i	c	c
z	r	s	x	v	t	l	s	a	y	u	g	t	g	h
f	m	f	c	u	l	n	x	n	e	f	k	f	e	e
l	j	h	v	b	g	v	e	m	r	t	y	n	t	q
c	d	n	u	q	u	c	i	a	r	s	i	i	s	u
u	n	i	q	u	e	i	m	f	g	d	d	q	v	e
t	y	f	p	f	f	j	j	d	u	u	w	t	u	j
a	q	u	k	v	u	d	t	h	m	s	e	z	u	e
i	p	l	a	g	u	e	p	m	k	p	t	h	w	k
s	x	f	i	m	c	e	w	n	m	l	o	q	z	a

- | | | | |
|--------|---------|---------|-----------|
| league | vague | antique | technique |
| plague | fatigue | mosque | |
| rogue | unique | cheque | |

Year 3 Term 2B Overview

Objectives that are in **pink** are a Y3/Y4 statutory requirement and individual words highlighted **pink** are from the Y3/Y4 statutory spelling list. The additional sets either: revise previously visited spelling rules from lower year groups; practise a spelling rule linked to a Y3/Y4 statutory spelling word or relate to a word, sentence or punctuation objective from the English Appendix 2 of the NC 2014. Each set of spellings contains 10 words linked to the objective.

Week 1 Homophones & Near Homophones	Week 2 Homophones & Near Homophones	Week 3 Adding the prefix bi- (meaning 'two' or 'twice') and Adding the prefix re- (meaning 'again' or back')	Week 4 Words ending in the /g/ sound spelt 'gue' and the /k/ sound spelt 'que'	Week 5 Words with a /sh/ sound spelt with 'ch'	Week 6 Statutory Spellings Challenge Words
grate great grown groan plain plane peace piece rain reign	scent sent vain vein rode road steel steal waist waste	bicycle biplane bisect bilingual biannual reappear redecorate reapply repay rebuild	league plague rogue vague fatigue unique antique mosque cheque technique	chef chalet machine brochure crochet ricochet parachute moustache champagne chute	address busy business heart fruit breathe strange complete extreme forwards

Words Ending In The /g/ Sound Spelt 'gue' and the /k/ Sound Spelt 'que'



TB

BANK

Date 24/11/16

£ 40—50

Pay Thomas Winkel

Forty Pounds and 50 pence

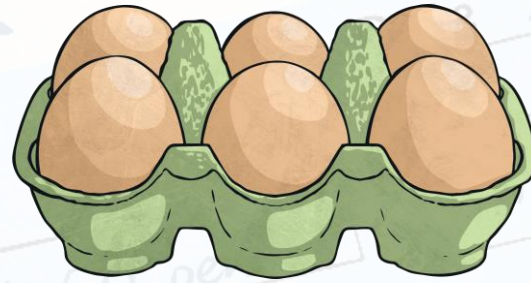
[Signature]

TWINKL BANK LTD
25 04 16

The /g/ sound can be formed in words using...



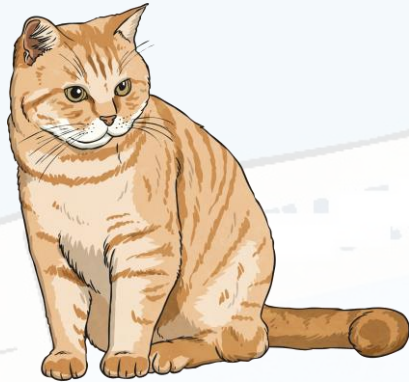
'g' in **golf**



'gg' as in **eggs**

But we are looking at another way of making a /g/ sound...

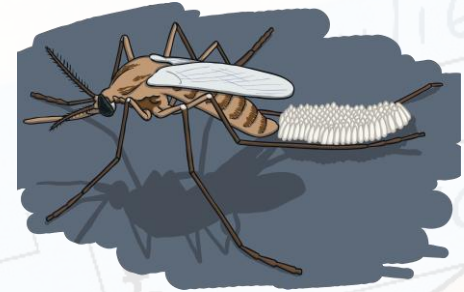
The /k/ sound can be formed in words using...



'c' in **cat**



'ck' as in **packet**



'qu' as in **mosquito**

But we are looking at another way of making a /k/ sound...

TWINKL
25 04 16

league

plague

rogue

vague

fatigue

unique

antique

mosque

cheque

technique

How have the /g/ and /k/ sounds been made in these words?

These words contain the 'gue' letter pattern making the /g/ sound and the 'que' letter pattern making the /k/ sound.

Here are this week's spellings to practise.

league

unique

plague

antique

rogue

mosque

vague

cheque

fatigue

technique

TB

BANK

Pay Thomas Winkel

Forty pounds and 50 pence

Date 24/11/16

£ 40 — 50

TWINKL BANK LTD
25 04 16



Words with a /sh/ Sound Spelt with 'ch'

Practise your weekly spelling words using cursive handwriting.

chef

chalet

machine

brochure

crochet

ricochet

parachute

moustache

champagne

chute

Words with a /sh/ Sound Spelt with 'ch'

Practise your weekly spelling words using cursive handwriting.

chef

chalet

machine

brochure

crochet

ricochet

parachute

moustache

champagne

chute

Words with a /sh/ Sound Spelt with 'ch'

Practise your weekly spelling words using print handwriting.

chef

chalet

machine

brochure

crochet

ricochet

parachute

moustache

champagne

chute

Stick Overlay Sheet Here

Stick Overlay Sheet Here

Stick Overlay Sheet Here

chef

chalet

machine

brochure

crochet

ricochet

parachute

moustache

champagne

chute

Look

Write

Check

Words with a /sh/ Sound Spelt with 'ch'



The /sh/ sound can be formed in words using...

'sh' in **shop**



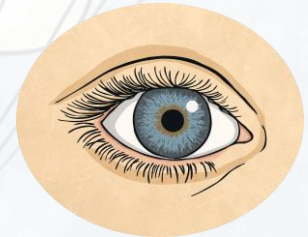
'ci' as in **special**



'ti' as in **po**ti**on**



'si' in **vi**si**on**



But we are looking at another way of making a /sh/ sound...



chef



chalet



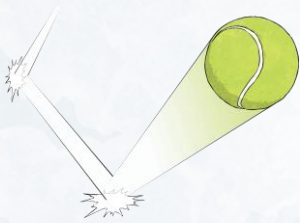
machine



brochure



crochet



ricochet



parachute



moustache



champagne



chute

How has the /sh/ sound been made in these words?

These words contain the 'ch' letter pattern making the /sh/ sound.

Here are this week's spellings to practise.

chef

chalet

machine

brochure

crochet

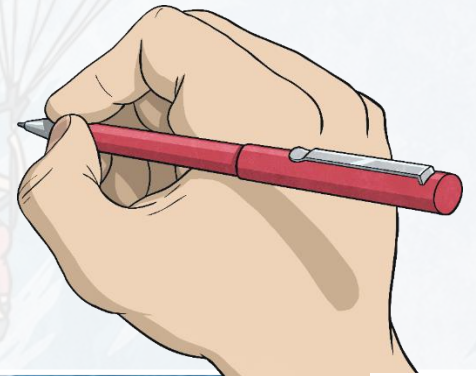
ricochet

parachute

moustache

champagne

chute





Week 5

Words with a /sh/ Sound
Spelt with 'ch'

chef ricochet

chalet parachute

machine moustache

brochure champagne

crochet chute

Week 5

Words with a /sh/ Sound
Spelt with 'ch'

chef ricochet

chalet parachute

machine moustache

brochure champagne

crochet chute

Week 5

Words with a /sh/ Sound
Spelt with 'ch'

chef ricochet

chalet parachute

machine moustache

brochure champagne

crochet chute

Week 5

Words with a /sh/ Sound
Spelt with 'ch'

chef ricochet

chalet parachute

machine moustache

brochure champagne

crochet chute

Week 5

Words with a /sh/ Sound
Spelt with 'ch'

chef ricochet

chalet parachute

machine moustache

brochure champagne

crochet chute

Week 5

Words with a /sh/ Sound
Spelt with 'ch'

chef ricochet

chalet parachute

machine moustache

brochure champagne

crochet chute

Week 5

Words with a /sh/ Sound
Spelt with 'ch'

chef ricochet

chalet parachute

machine moustache

brochure champagne

crochet chute

Week 5

Words with a /sh/ Sound
Spelt with 'ch'

chef ricochet

chalet parachute

machine moustache

brochure champagne

crochet chute

Words with a /sh/ Sound Spelt with 'ch'

y x i b r o c h u r e h
m v w b t b v s m g n z
o z c t e h c o r c g g
u s p s h g j k c d a l
s e a s c l c w t h p d
t o r f o i h k o m m d
a n a m c n e t c a a n
c e c o i d f a l c h q
h t h g r t e l a h c t
e u u f t x o f x i v x
k h t p j p p u z n b s
s c e l t m t l h e k a

chef
chalet
machine
brochure

crochet
ricochet
parachute
moustache

champagne
chute

Words with a /sh/ Sound Spelt with 'ch' Answers

y	x	i	b	r	o	c	h	u	r	e	h
m	v	w	b	t	b	v	s	m	g	n	z
o	z	c	t	e	h	c	o	r	e	g	g
u	s	p	s	h	g	j	k	c	d	a	l
s	e	a	s	c	l	c	w	t	h	p	d
t	o	r	f	o	i	h	k	o	m	m	d
a	n	a	m	c	n	e	t	c	a	a	n
c	e	c	o	i	d	f	a	l	c	h	q
h	t	h	g	r	t	e	l	a	h	e	t
e	u	u	f	t	x	o	f	x	i	v	x
k	h	t	p	j	p	p	u	z	n	b	s
s	c	e	l	t	m	t	l	h	e	k	a

chef	crochet	
chalet	ricochet	champagne
machine	parachute	chute
brochure	moustache	

Year 3 Term 2B Overview

Objectives that are in pink are a Y3/Y4 statutory requirement and individual words highlighted pink are from the Y3/Y4 statutory spelling list. The additional sets either: revise previously visited spelling rules from lower year groups; practise a spelling rule linked to a Y3/Y4 statutory spelling word or relate to a word, sentence or punctuation objective from the English Appendix 2 of the NC 2014. Each set of spellings contains 10 words linked to the objective.

Week 1 Homophones & Near Homophones	Week 2 Homophones & Near Homophones	Week 3 Adding the prefix bi- (meaning 'two' or 'twice') and Adding the prefix re- (meaning 'again' or 'back')	Week 4 Words ending in the /g/ sound spelt 'gue' and the /k/ sound spelt 'que'	Week 5 Words with a /sh/ sound spelt with 'ch'	Week 6 Statutory Spellings Challenge Words
grate great grown groan plain plane peace piece rain reign	scent sent vain vein rode road steel steal waist waste	bicycle biplane bisect bilingual biannual reappear redecorate reapply repay rebuild	league plague rogue vague fatigue unique antique mosque cheque technique	chef chalet machine brochure crochet ricochet parachute moustache champagne chute	address busy business heart fruit breathe strange complete extreme forwards

Statutory Spelling Challenge Words

Practise your weekly spelling words using cursive handwriting.

address

busy

business

heart

fruit

breathe

strange

complete

extreme

forwards

Statutory Spelling Challenge Words

Practise your weekly spelling words using cursive handwriting.

address

busy

business

heart

fruit

breathe

strange

complete

extreme

forwards

Statutory Spelling Challenge Words

Practise your weekly spelling words using print handwriting.

address

busy

business

heart

fruit

breathe

strange

complete

extreme

forwards

Stick Overlay Sheet Here

Stick Overlay Sheet Here

Stick Overlay Sheet Here

address

busy

business

heart

fruit

breathe

strange

complete

extreme

forwards

Look
Say
Cover

Write

Check

<p>Week 6</p> <p>Statutory Spelling Challenge Words</p> <p>address breathe</p> <p>busy strange</p> <p>business complete</p> <p>heart extreme</p> <p>fruit forwards</p>	<p>Week 6</p> <p>Statutory Spelling Challenge Words</p> <p>address breathe</p> <p>busy strange</p> <p>business complete</p> <p>heart extreme</p> <p>fruit forwards</p>	<p>Week 6</p> <p>Statutory Spelling Challenge Words</p> <p>address breathe</p> <p>busy strange</p> <p>business complete</p> <p>heart extreme</p> <p>fruit forwards</p>	<p>Week 6</p> <p>Statutory Spelling Challenge Words</p> <p>address breathe</p> <p>busy strange</p> <p>business complete</p> <p>heart extreme</p> <p>fruit forwards</p>
<p>Week 6</p> <p>Statutory Spelling Challenge Words</p> <p>address breathe</p> <p>busy strange</p> <p>business complete</p> <p>heart extreme</p> <p>fruit forwards</p>	<p>Week 6</p> <p>Statutory Spelling Challenge Words</p> <p>address breathe</p> <p>busy strange</p> <p>business complete</p> <p>heart extreme</p> <p>fruit forwards</p>	<p>Week 6</p> <p>Statutory Spelling Challenge Words</p> <p>address breathe</p> <p>busy strange</p> <p>business complete</p> <p>heart extreme</p> <p>fruit forwards</p>	<p>Week 6</p> <p>Statutory Spelling Challenge Words</p> <p>address breathe</p> <p>busy strange</p> <p>business complete</p> <p>heart extreme</p> <p>fruit forwards</p>

Statutory Spelling Challenge Words

b t c w f b r e a t h e e y v
q u b x n l s v p a w e f i n
b f s t r a n g e d j y r z m
f b w y t u f v g r v u u s t
q d d x m p c h d d f u i k n
f s p n v h t q z p o h t y t
y t c i u e x a d d r e s s m
i p c y w a c c b m w z t l o
v y o m k r f v z u a j n h l
j t m t s t t u n i r n c z r
l p p s o x h x u c d a p v d
g x l b u s i n e s s w e i d
y j e y o k j u z h u f g y p
w a t j e n g e x t r e m e k
b t e t e g p p m r p v l m j

address

heart

strange

forwards

busy

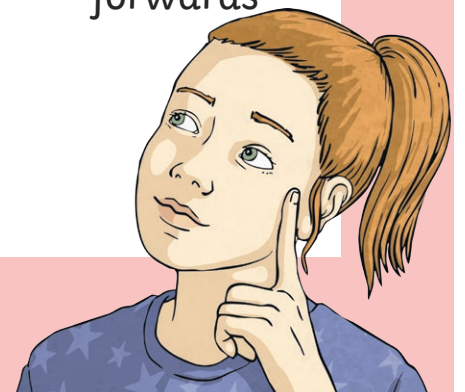
fruit

complete

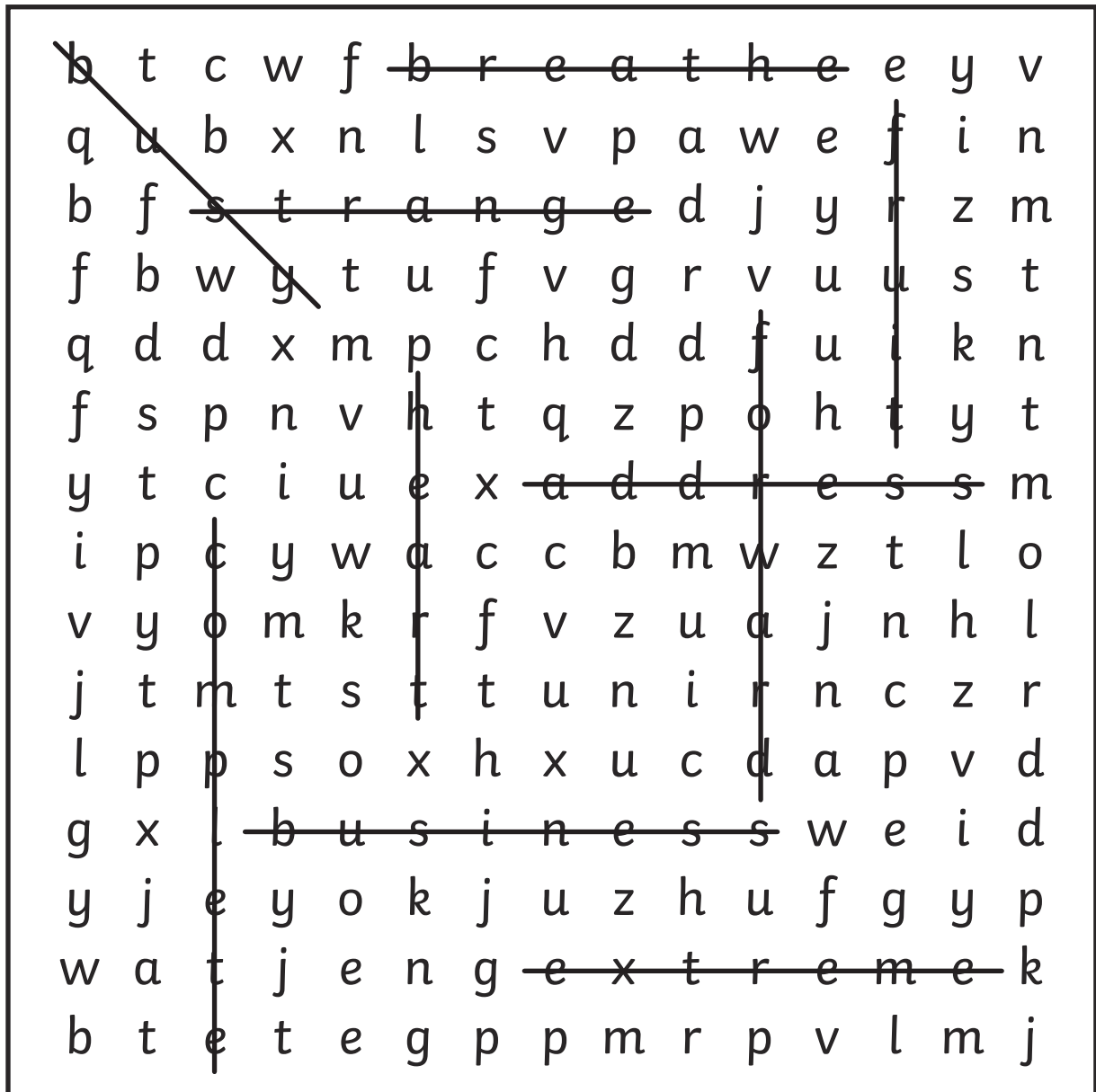
business

breathe

extreme



Statutory Spelling Challenge Words - Answers



address

heart

strange

forwards

busy

fruit

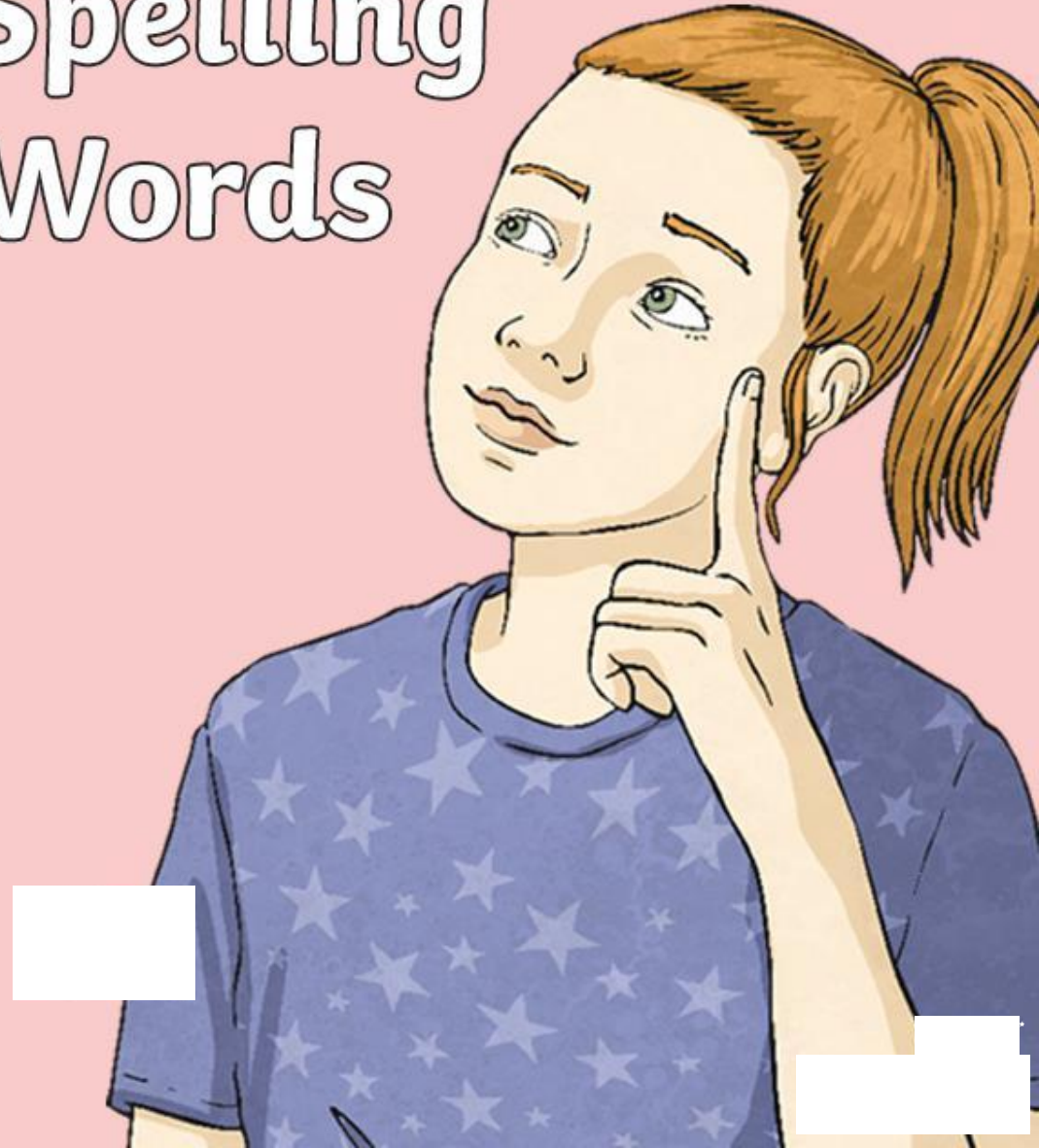
complete

business

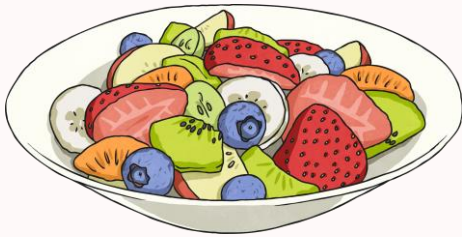
breathe

extreme

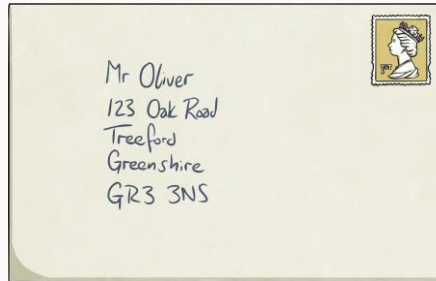
Statutory Spelling Challenge Words



Do these words have anything in common?



fruit



address



heart

The short answer is... no!

The only thing they have in common is that they are tricky words from the Statutory Spelling List.

address

busy

business

heart

fruit

breathe

strange

complete

extreme

forwards

Can you think of any little rhymes or words within words that will help you to remember these spellings?



Here are this week's spellings to practise.

address

busy

business

heart

fruit

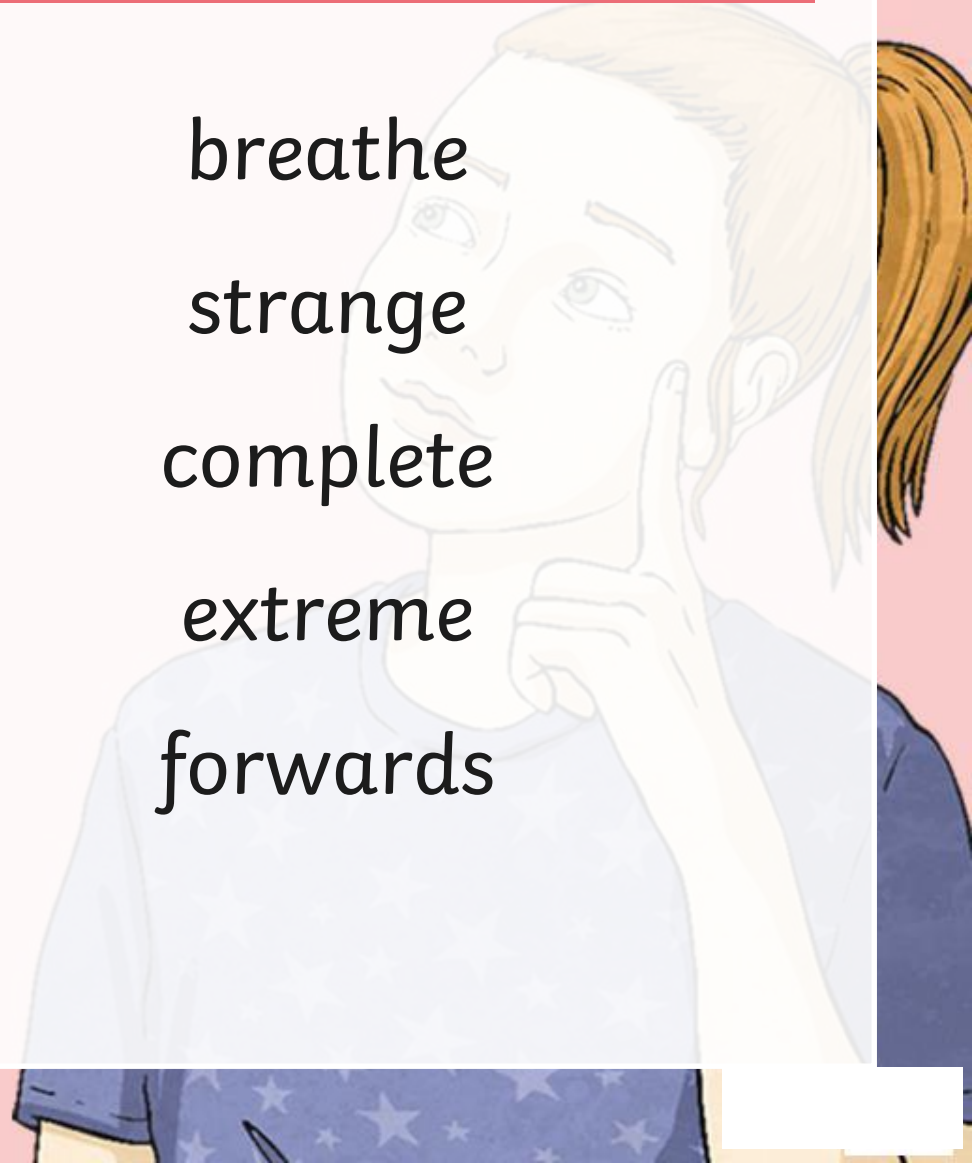
breathe

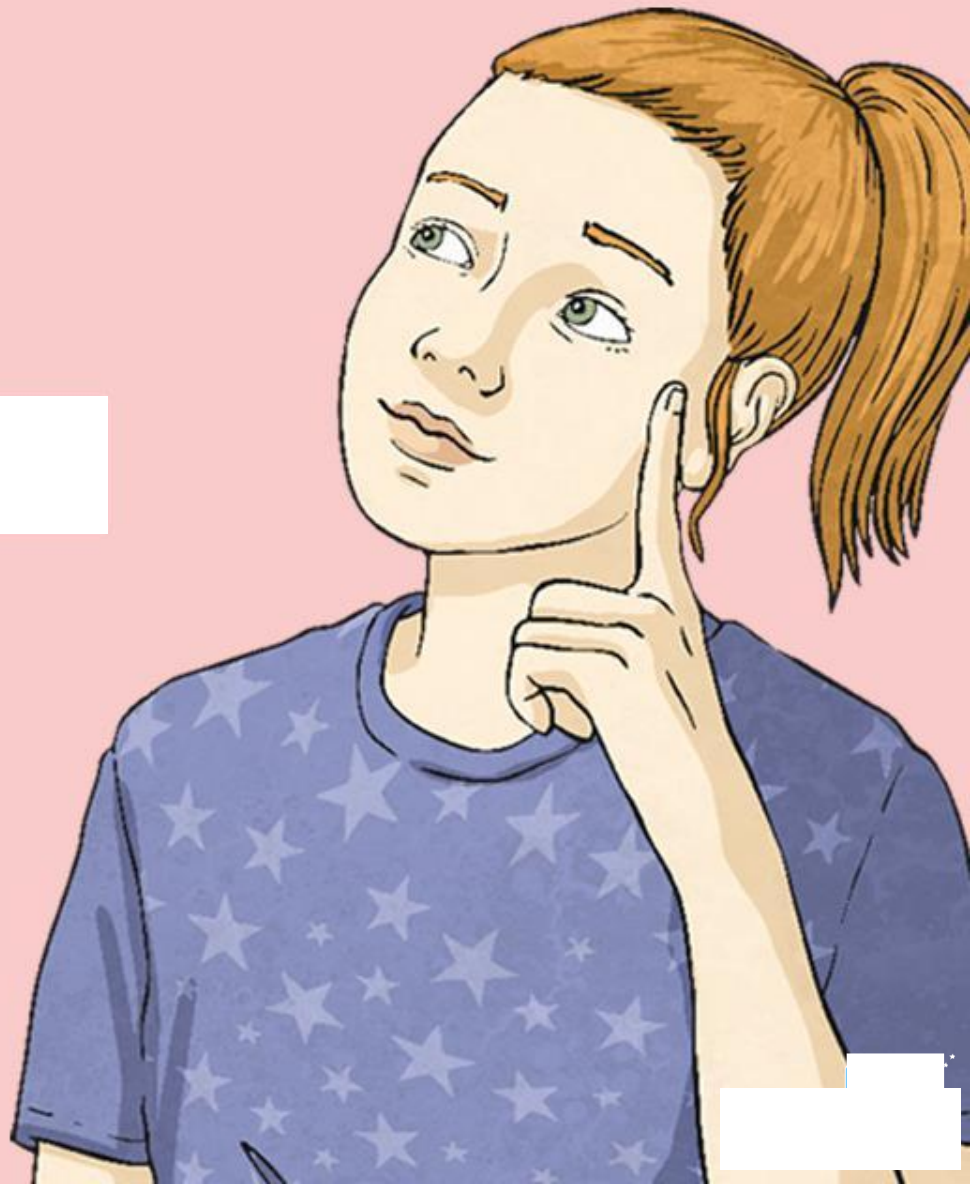
strange

complete

extreme

forwards





Year 3 Term 2B Overview

Objectives that are in pink are a Y3/Y4 statutory requirement and individual words highlighted pink are from the Y3/Y4 statutory spelling list. The additional sets either: revise previously visited spelling rules from lower year groups; practise a spelling rule linked to a Y3/Y4 statutory spelling word or relate to a word, sentence or punctuation objective from the English Appendix 2 of the NC 2014. Each set of spellings contains 10 words linked to the objective.

Week 1 Homophones & Near Homophones	Week 2 Homophones & Near Homophones	Week 3 Adding the prefix bi- (meaning 'two' or 'twice') and Adding the prefix re- (meaning 'again' or 'back')	Week 4 Words ending in the /g/ sound spelt 'gue' and the /k/ sound spelt 'que'	Week 5 Words with a /sh/ sound spelt with 'ch'	Week 6 Statutory Spellings Challenge Words
grate	scent	bicycle	league	chef	address
great	sent	biplane	plague	chalet	busy
grown	vain	bisect	rogue	machine	business
groan	vein	bilingual	vague	brochure	heart
plain	rode	biannual	fatigue	crochet	fruit
plane	road	reappear	unique	ricochet	breathe
peace	steel	redecorate	antique	parachute	strange
piece	steal	reapply	mosque	moustache	complete
rain	waist	repay	cheque	champagne	extreme
reign	waste	rebuild	technique	chute	forwards